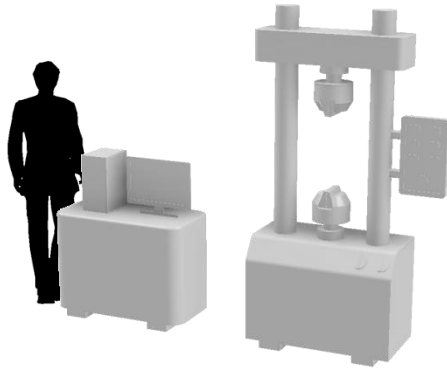
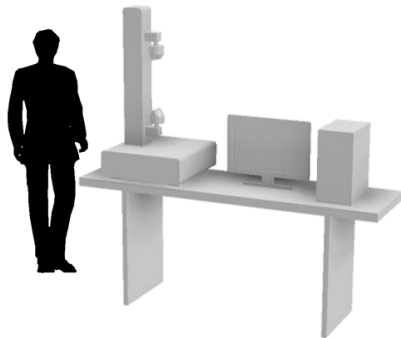


⦿ Double-column UTM



⦿ Single-column UTM



⦿ **MaCh3D**
[R] Evolutionary UTM

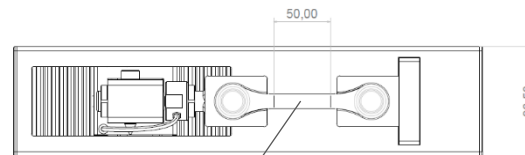
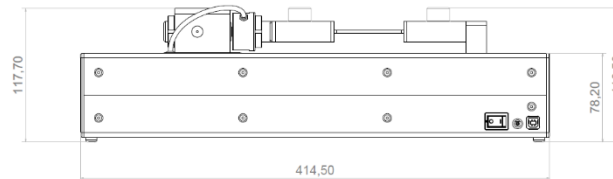


MaCh 3D is a desktop-size Universal Testing Machine (UTM) for mechanical characterization of materials and small components, designed to simplify and speed up testing process.

MaCh 3D can operate connected via USB or wi-fi to a PC, a tablet or a smartphone.

MaCh 3D offers a Cloud platform for tests programming, repository and materials intelligence.

MaCh 3D can be interconnected to production machines to correlate materials properties with process parameters.



ASTM D638 type-I gage length

MaCh3D srl

Proudly engineered in Parma & made in Italy.

www: www.mach3d.it | mail: hello@mach3d.it



MaCh3D
[R] Evolution in Material Testing



Finally affordable

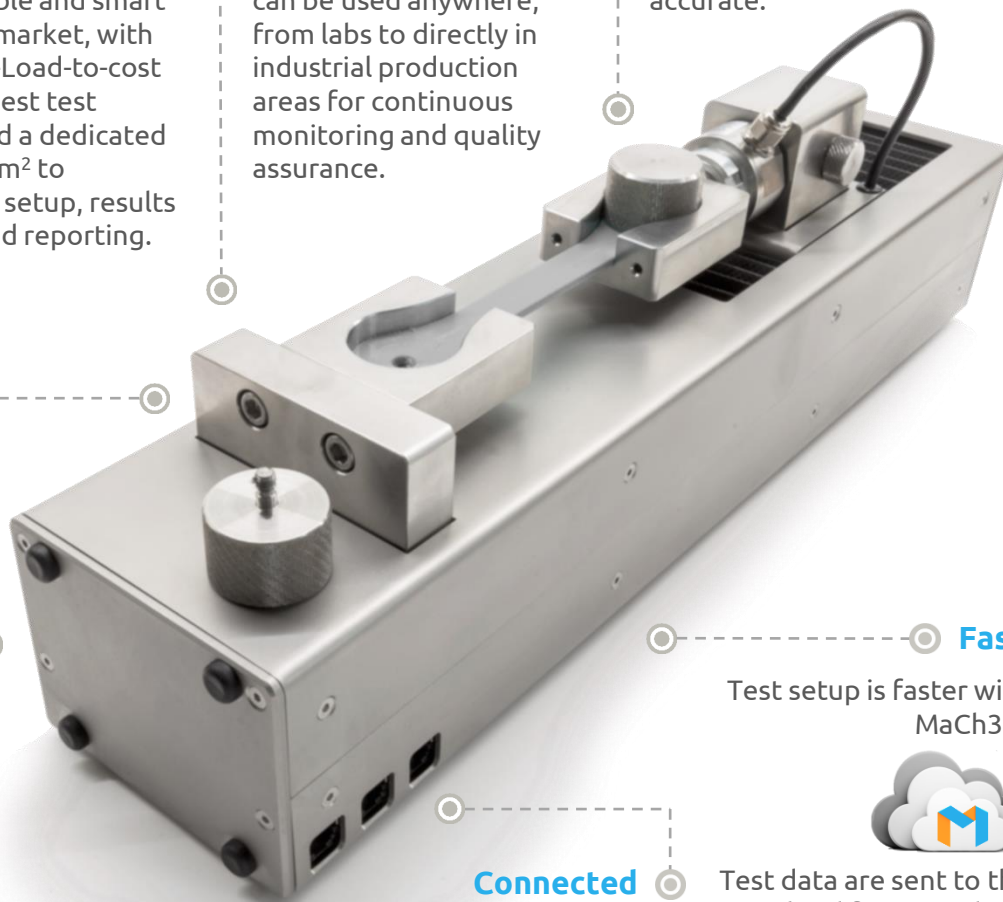
Thanks to advanced engineering, structural optimization, and design-to-cost, MaCh3D is the most affordable and smart UTM¹ on the market, with the best Max-Load-to-cost ratio, the easiest test procedure and a dedicated Cloud platform² to facilitate test setup, results processing and reporting.

Compact size

MaCh3D is the smallest but strong UTM¹. Thanks to its extremely compact design and size, MaCh3D can be used anywhere, from labs to directly in industrial production areas for continuous monitoring and quality assurance.

Simple but Accurate

Thanks to its patented fixture with self-alignment capability, MaCh3D testing is easier, faster and even more accurate.



Safe

MaCh3D keeps operator hands in a safe place. MaCh3D does not expose to crushing hazard.

Connected

MaCh3D can operate wired (USB) or wireless (Wi-Fi)³. Thanks to the Cloud MaCh3D is interconnected² with production machines.

Fast

Test setup is faster with MaCh3D.



Test data are sent to the cloud for immediate post-processing, reporting and sharing. Test-to-report workflow fully automatable.



MaCh3D

[R] Evolution in Material Testing

Technical specifications

Max Load 5 kN (500 kg)
tension - compression

Dimension L x W x H
415 x 97 x 119 mm

Weight ≈ 12.5 kg

Connectivity USB, Wi-Fi

Travel speed 0.1 to 30 mm/min (test)

Accuracy Load ± 0.05 N
Displacement ± 0.24 μm

Overall travel 100 mm

External sensors (optional) 3 analogue inputs
strain-gauge, thermocouple transducers
1 full-bridge input
external load cell or extensometer
1 digital INPUT

Sampling rate up to 40 Hz / 20 bit

Actions Move up/down, Return, Hold,
Hold-on-load, Go-to, Repeat

¹ UTM Universal Testing Machine

² under development, available in 2022

³ Wi-Fi progressively available starting from March 2022