

SLM DENTAL

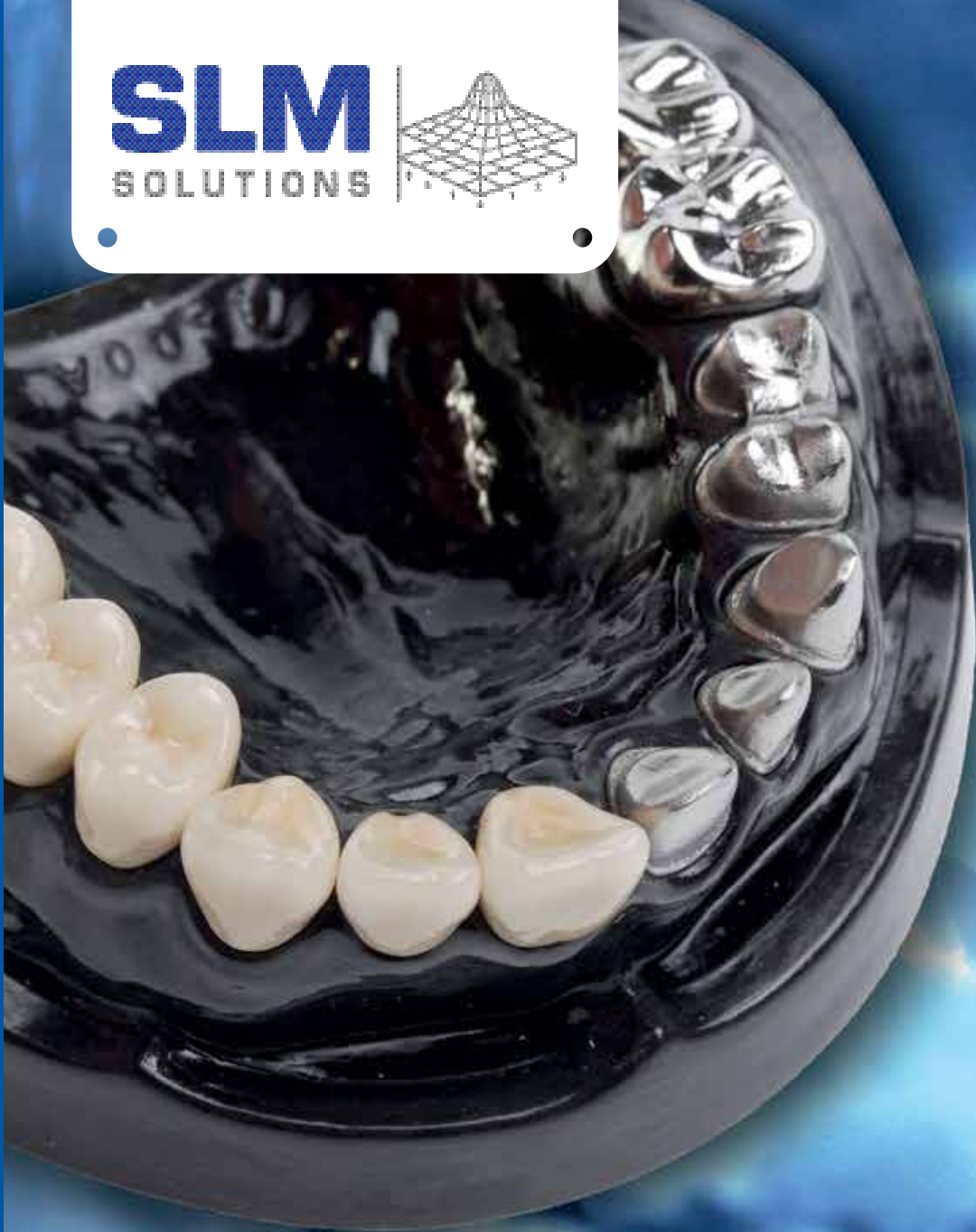
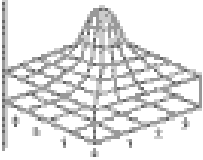
Laserstrahlschmelzanlage



Präzise, funktional, verlässlich für schnelle Ergebnisse

3D-Drucktechnologie für die Herstellung von Dentalgerüsten und Zubehör

SLM
SOLUTIONS

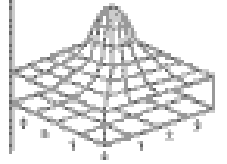


In the steadily increasing market for 3D printing technology SLM Solutions is a leading provider of metal based additive manufacturing technology . These extremely reliable and economical systems enable the manufacturing of highly complex geometry that cannot be milled in such a way. The systems simplify the manufacturing process of tooth caps, crowns and further dental components. SLM Solutions supplies specialized CoCr nickel-free metal powder for the dental sector.

SLM DENT



DENTAL



SLM DENTAL



The additive manufacturing of crown and bridge frameworks changes the industrial production process of modern tooth replacement.

The selective laser melting systems SLM[®]125^{HL} and SLM[®] 280^{HL} are used for the manufacturing of dental models by metal powder. These systems have a positive effect on the productivity, the quality of the final products and the cost of parts based on the available data.

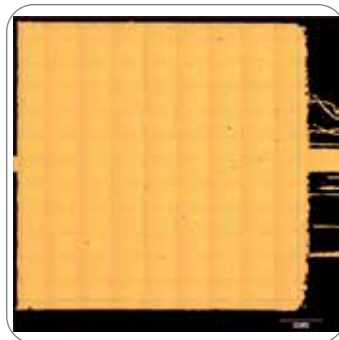


Within just a few hours, e.g. the SLM[®] 280^{HL} generates up to 400 tooth caps. Part accuracy, perfect fit, look and feel can be reproduced precisely. Models may be produced directly in multiple versions, e.g. as a control model and unlike plaster models, SLM models are break-resistant.



The systems of SLM Solutions operate with high precision and reliability. Fulfilling the required accuracy demanded by the industry and keeping the tolerance ranges is achieved by this technology.

SLM Solutions supplies for the dental sector specially developed metal powder, the SLM Medi-Dent. Cobalt-Chrome, Titanium und Stainless Steel alloys are biocompatible, display high-strength and good elasticity values.



The material science analysis of cross-sectional images confirms the outstanding quality of our metal powders. In the manufacturing process of the SLM technology the components achieve even better metallurgical characteristics than using the conventional casting process with the same material.



Data Sheet of the Selective Laser Melting System

Please order our system folder



Material Data Sheet

Please order our special powder catalog

